

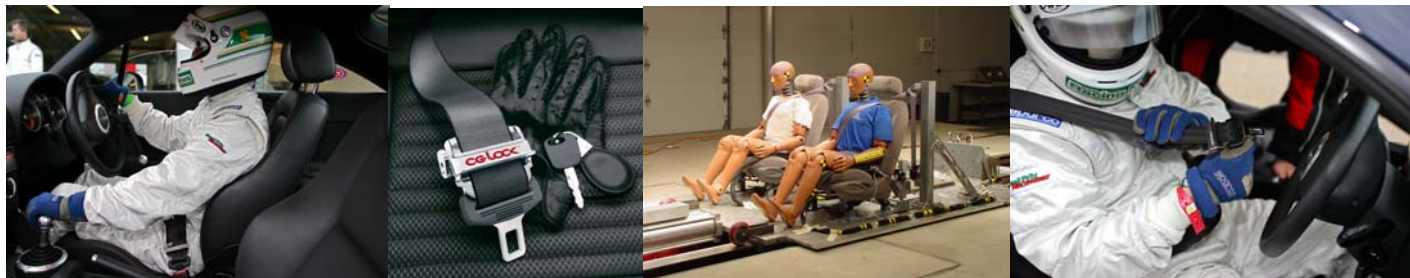
**Get faster results! ... Guaranteed Improvement in stability.
The performance driving instructors' 'must-have'**

PRESS RELEASE – NEW CG-LOCK REVEALED

CG-Lock launches new portable version

The CG-Lock has been proven to give a driver 80 per cent of the benefits of a race harness, but without any of the hassle. It fits in minutes to any standard seatbelt and is fully removable. Without a harness or a CG-Lock, the driver is unable to dedicate their concentration or energy to the skills of driving, because they are constantly trying to stay in the seat. This leads to a waste of energy -- and a serious distraction from the enjoyment of performance driving. As top ARDS professional performance driving instructor Anthony Dunn said:

"For drivers not wearing a race harness, the CG-Lock® is a must-have".



Now, the CG-Lock is available in a 'fit in 10 seconds, release in 2' version, designed for the many instructors who need to move between non-harnessed cars on busy track days or at race and rally schools.

The new 'Instructor' version was launched during Rallyday 2006 at Castle Combe Circuit on Saturday 22 July, where one of the star performers confirmed that he has become a regular user of the CG-Lock. Lombard RAC Rally winner Pentti Airikkala, now a leading driver coach and famous as the master of left-foot braking, said: "I use this device every time and it's a really good system. I recommend it to all my students. It does exactly what it promises."

Calum Lockie, British GT Champion and Le Mans 24hr race driver, said: "Ever the innovative company, the 'Instructor' version gives instructors a 'mobile' CG-Lock, which they can easily and quickly fit and remove as they move from car to car.

"Well done, CG-Lock! Yet again, they have reacted to the needs of their customers. This will become an invaluable addition to the instructor's toolbox."

Also welcoming the new 'Instructor' version, Dunn said: "Most instructors have to spend many hours in clients' cars that do not have race harnesses. This leads to significant strain on the lower back over the course of a day and this is avoided by using the CG-Lock. The benefits are huge for the students, too, as they learn much more about controlling the car, rather than trying to hang on when being instructed. They can channel their energy into what really counts -- driving!"

Many drivers & passengers have also reported an added benefit from the CG-Lock: on longer-distance driving (including motorways), lower backache is eliminated as one's hips are firmly secured in the correct position, keeping the spine against the lumbar support of the car seat. The CG-Lock acts as an 'anti-slouch' device.

Retail Sales - Tel: 08701 CG LOCK (08701 245625)

Wholesale and Instructor Version orders - Tel: 0161 832 3786 (discounts available on bulk orders)

Email: cglock@btinternet.com

Website: www.cg-lock.co.uk



WARNING: the CG-Lock® can seriously improve your driving performance.

CG-Lock Background

Lap Belt Cinch (Europe) Ltd (see www.cg-lock.co.uk) market and sell the CG-Lock, a unique product specifically designed to assist the control, comfort and stability of performance car drivers, both on the road and *especially on the track*.

Interview with Calum Lockie (British GT Champion & Le Mans 24hr driver) and demonstration of this potentially safer seatbelt at the International Historic Motorsport Show, Stoneleigh Park, UK, Friday at 3pm, Stand N24

For those adrenaline-junkies who enjoy driving their vehicles to full potential on the track, **the advantages of increased car control offered by a racing harness are obvious.**

The problem: People using their 'everyday' car for the track rarely fit full race harnesses for lots of reasons, including:

- Cost & fitting: involves drilling, loss of rear seats and extra roll bar fitting for soft tops...
- Harnesses are not easy to live with on the highway... try reverse parking in one...or turning on the CD player!
- Concerns over insurance & reduced resale value of the car

The solution: the **CG-Lock**...the biggest innovation in seatbelts since the inertia reel.

A simple and ingenious device, the **CG-Lock** is manufactured from high quality stainless steel components and is installed in just a few minutes, with no drilling or damage to the standard factory fitted seatbelt. It is fully removable in seconds and allows full upper body movement. When in the driving position the hips become ones **centre of gravity**... with the **CG-Lock** (CG stands for Centre of Gravity) fitted you are held tight in the car seat, with 80% of the driver control and feedback of a race harness! (as verified by Circuit Driver & British Racing News magazines). **Buckling up will never be the same!**

The CG-Lock has received nothing but praise from professional drivers and the press since its launch at the Autosport Show 2005:

"...for an unparalleled improvement in lap times and driver performance look no further than the CG-Lock" *Calum Lockie, British GT Champion & Le Mans Driver. (see www.calumlockie.com and www.goldtrack.co.uk)*

"For any driver not wearing a harness, the CG-Lock is a must have" *Anthony Dunn, Professional Driving Instructor (see www.ivannagofaster.com)*

"This is one hell of a good idea... a cost effective way to increase driver control in any vehicle on any terrain" *Gary Powell, Professional Stuntman (Golden Eye, Saving private Ryan, World is not Enough, Terminator 3, The Saint, Blade 2, Snatch, Mission Impossible...see www.garypowellstunts.com)*

"Ingenious" *The Daily Telegraph (Motoring Section) – May 2006.*

"I use this device all the time and it's a really good system. I recommend to it all my students. It does exactly what it promises" *Pentti Airikkala – Lombard RAC Rally Champion & master of 'left foot braking' (pentti@leftfootbraking.com)*

The **CG-Lock** is patented, and has been fully crash tested to the highest global automotive 'NCAP' standards at the independent 'VIA Testing Facility' in the US, and has demonstrated that when fitted the **CG-Lock** does **NOT interfere with the safety of the factory fitted seatbelt** with or without pre-tensioners (full details can be viewed on our web site: www.cg-lock.co.uk).

The **CG-Lock** is **not intended to replace a harness and is not a safety device**... it is purely for those drivers who do not want (or cannot have) a harness for whatever reason. The **CG-Lock** is designed as a compromise for the majority of drivers who occasionally take their cars on the track or compete in road rallies. We know that a significant proportion of performance drivers would like to get more out of their car but spend money on the *car* performance...the **CG-Lock** improves the performance of the *driver*, not the car and will give drivers that 'locked in' sporty feeling in just about any car. **The CG-Lock will do more to improve your lap time than spending £1,000's on engine modifications...and at a fraction of the cost! The CG-Lock is the 'must-have' add-on for 2006.**

We know that to get the best out of any car, hands should be light on the wheel and feet light on the pedals (ask any performance driving instructor). Performance drivers spend a lot of unwanted effort in keeping upright in the seat on hard cornering. The **CG-Lock** eliminates this need to brace elbows and knees on spirited driving... so driver's can get better results from their cars... concentrating on the driving, not 'hanging on'. Feedback is improved too for faster reaction to more subtle weight transfer, slip angle, and traction clues.

An added benefit is that, by pulling the hips back into the seat, the **CG-Lock** helps create the correct driving posture... maintaining the right curvature of the spine... it's an 'anti-slouch' device!... leading to less lower back problems and more enjoyable driving!

Email: cglock@btinternet.com, Website: www.cg-lock.co.uk

WARNING: the CG-Lock[®] can seriously improve your driving performance.

